

HOT MIX - 30

**Mobiles Asphalt-Mischwerk
150 t/h**



LINTEC



KALOTTIKONE OY



Bild 1

Doseureinheit bestehend aus 4 Einzeldoseuren mit je 10,5 m³ Inhalt. Einzel-, stufenlos regelbar, mit Bandabzug, Sammelband und 2-Achs Anhängerfahrgestell.

Four compartment cold feeder units mounted on 2-axle trailer chassis, 10,5 m³ capacity each with variable speed drive and collecting belt.

Bild 2

Die **Hot Mix-30** Anlage besteht aus 2 Haupteinheiten, beide voll mobil als Semi-Trailer. Die Trommel mit den vier Heißtaschen hat eine eigene Hydraulik für das Ausfahren der Standbeine.

The **Hot Mix-30** Plant has 2 main units, the dry drum with the hot bins and the mixer with the weighing devices inclusive the hot elevator. Both units are fully mobile as semi-trailers. The drum is supplied with an own hydraulic unit for extension of the support legs.

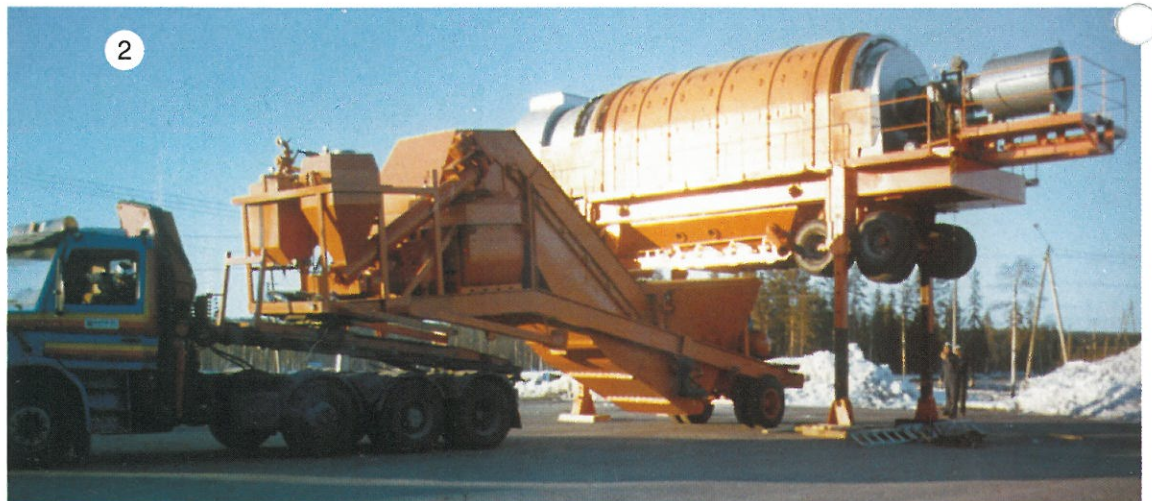


Bild 3

Die **LINTEC** Siebtrommel in ihrer kompakten Bauweise ermöglicht die volle Mobilität einer 150-Tonnen Anlage. Mit der Vierfachabsiebung und den 4 Heißtaschen kann Qualitätsasphalt wie in einer stationären Anlage hergestellt werden.

The **LINTEC** Sreen Drum with its compact design offers the full mobility of a 150-to/h Batch Plant. The 4-fold screening and the 4 hot bins guarantee a high quality of Asphalt Premix.

Bild 4 „Mobile Filter“



SPECIFICATIONS

A. DOSEUREINHEIT KAT-200 COLD FEEDER UNIT

Number of hoppers	4
Volume of hoppers	10.5 m ³ each
Dimensions of hopper LxWxH	3400x2800x2300 mm
Transport dimensions LxWxH	19000x2800x4100 mm
Weight	12000 kg
2-axle trailer	Tyres 11 R 22.5
Capacity	100 t/h each
Feeder belt LxW	1600x800 mm
Drive motor	2.2 kW
Collecting belt	3 trough carrier
Capacity	200 t/h
Dimensions - LxW	15000x800 mm
Drive motor	5.5 kW

WURFBAND KAC THROW BELT KAC

Capacity	180 t/h
LxW	15000x650 mm
Drive motor	7.5 kW
Total dimensions - LxWxH	16000x960x460 mm
Transport dimensions LxWxH	8000x960x950 mm
Weight	1200 kg

C. TROMMEL MIT HEISSTASCHEN KASD-180 DRYER AND HOT BINS KASD-180

Drum type	Lintec Sreen Drum
Drying capacity	160 t/h
Dimensions DiaxL	2400x8300 mm
Drive	chain
Drive motor	55 kW
Burner type	Schmitz + Apelt DFOV
Type of fuel standard burner	diesel
Burner capacity	400-1200 kg/h
Blower capacity	30000 m ³ /h
Blower motor	45 kW

Screen

Type	rotary, mounted on dryer drum externally
Number of sections	4
Screening area	30 m ²
Sieve sizes standard	6 mm, 12 mm, 20 mm, 35 mm
Sieve sizes may be changed to suit needs.	

Hot aggregate bins

Number of bins	4 compartments, directly under the rotary screens
Total volume	23 t
Travel dimensions LxWxH	15000x3500x4770 mm
Weight	40000 kg
2-axle semi-trailer	Tyres 12 R 22.5

D. MISCHER KAM-180 MIXER UNIT KAM-180

Mixer type	twin shaft, compulsory mixer with replaceable liners, paddle arms and mixer blades
Two drive motors	37 kW each
Maximum Capacity per batch	3000 kg
Discharge gate	pneumatically operated
Aggregate scales 3000 kg	Load-cell suspension. Automatic cumulative weighing of up to 5 components consisting of 4 aggregates and 1 additive.
Bitumen scale 300 kg	Load-cell suspension, automatic cumulative weighing of up to 2 components of bitumen.
Filler scale 300 kg	Load-cell suspension. Automatic cumulative weighing of up to 2 components of filler.

Hot elevator

Type	two-chain bucket elevator
Capacity	300 t/h
Drive motor	11 kW
Gear box	shaft mounted gear

Bitumen injection pump

Type	gear pump, thermal oil heated
Size	3"
Capacity	550 l/min
Drive motor	7.5 kW

Air compressor

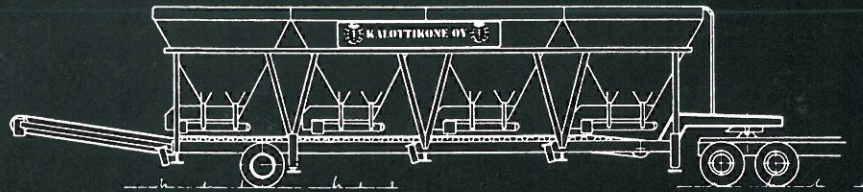
Type	air cooled
Capacity	1000 l/min
Motor	7.5 kW
Mixer unit transport dimension LxWxH	15000x3000x4700 mm
total weight	14000 kg
1-axle semi-trailer	Tyres 11 R 22.5

E. KOMMANDOKABINE CONTROL CABIN

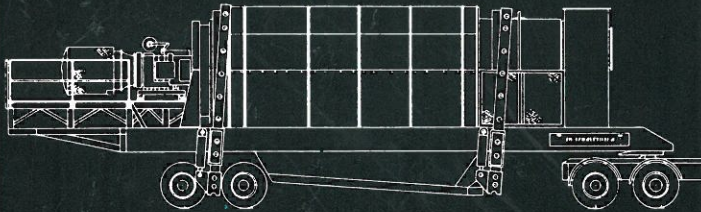
Type	Container with windows at front, back and both sides. Insulated and air conditioned (can also be trailer).
Contents	Switch cabinets, all electric circuitry and controls.
Controls	Fully automatic with micro-processor and manual override.

F. FÜLLER-SILO FILLER HOPPER

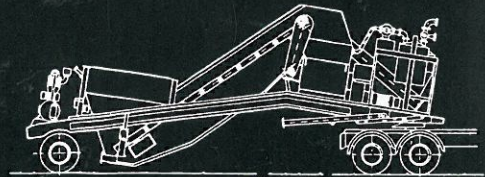
Hopper type	horizontal
Capacity	50 m ³
Dimensions - LxWxH	11000x3000x4200 mm
1 bottom screw conveyor	30 t/h, 7.5 kW motor
2-axle trailer	Tyres 11 R 22.5
Weight	12000 kg



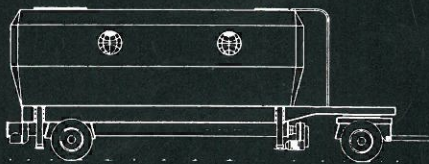
Cold Feeder KAF - 200



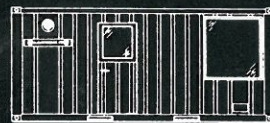
Screenig Drum KASD - 180



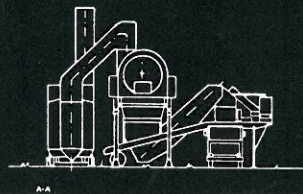
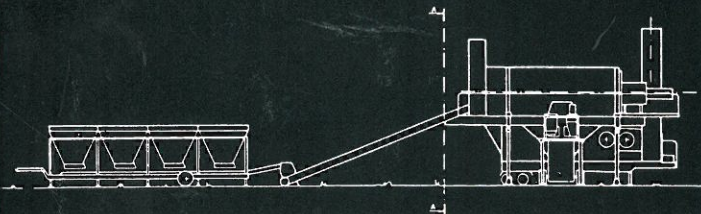
Mixer Unit KAM - 180



Filler Hopper KAFH - 50



Cabin and Automation



**Hot Mix 30
Mobile Asphalt Plant**



LINTEC GMBH & CO KG
Ahornallee 1
D-2114 Hollenstedt
W-GERMANY

Phone: 04165-81038
Fax: 04165-81007

ASPHALT PLANT LIMITED
La Motte Street
St. Helier, Jersey
British Isles

Phone: 534-74622
Fax: 534-27349

LINTEC INDUSTRIES PTE LTD
165 A Jalan Jurong Kechil
Singapore 2159
SINGAPORE

Phone: 4696311
Fax: 4698966